

# BR – chemReactor 15 – 60 Liter

The basic Büchi pilot plant reactor

- compact
- economic
- simple
- safe



## Specs:

- Multi purpose plant
- Standardized setups
- 15 – 60 liter jacketed full glass reactors
- $-60^{\circ}\text{C}$  to  $+200^{\circ}\text{C}$
- $-1\text{bar (FV)}$  to  $+0.5\text{ bar}$
- Efficient mixing with powerful stirrer drive
- Glass lined stirrer
- Glass overhead with «büchiflex» components
- Built for Ex classified areas (ATEX)
- cGMP design
- Stainless steel 316 scaffolding

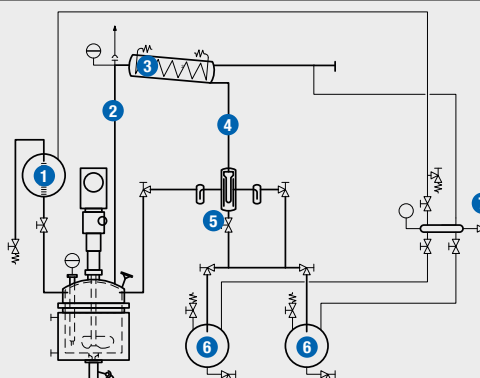
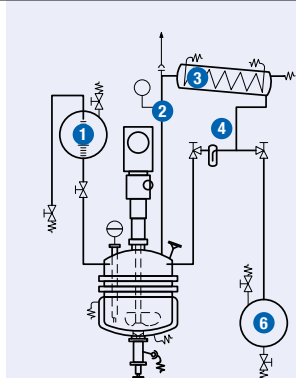
# Büchi chemReactors – Complete range of pilot plant reactor systems

	BR chemReactor	GR chemReactor	CR chemReactor
visibility	++++	++++	++
stability	+++	+++	++++
heat transfer	++	++	++++
multipurpose reactor	++	+++	++++

**Performance: BR chemReactor → GR chemReactor → CR chemReactor**

Büchi chemReactors	BR15 – 60	GR15 – 60	CR15 – 252
Reactor volume	15 – 60 liters	15 – 60 liters	15 – 250 liters
<b>Comparison: 15 liter setup</b>			
Size WxDxH	1220 x 700 x 2190mm	1680 x 955 x 2190mm	1680 x 955 x 2190mm
Reactor bottom section	Full glass	Full glass	Glass lined steel
Reactor cover	Glass / Glass lined steel	Glass / Glass lined steel	Glass / Glass lined steel
Stirrer	Glass lined steel	Glass lined steel	Glass lined steel
Baffle / Pt100 in reactor	Glass	Glass	Glass lined steel
Pt100 in vapor head	No	Yes	Yes
Phase separator	No	Yes	Yes
Feeder / receiver	1	1 / 2	1 / 2
Vacuum manifold	No	Yes	Yes
Operating temperature	-60°...+200°C	-60°...+200°C	-60°...+200°C -85°...+200°C (Option: CR162 / CR252) -100°...+200°C (Option: CR15 – CR101)

- 1 Feeder
- 2 Vapor duct
- 3 Condenser
- 4 Condensate piping
- 5 Phase separator
- 6 Receiver
- 7 Vacuum distributor



## «büchiflex»

«büchiflex» – the unique flexible and modular glass system using standardized components allows for absolutely stress-free installation and makes it possible to assemble piping on a gradient without the need for any special compensators.

«büchiflex» glass connections are

- clean
- safe
- reliable

